



On Farm Connection Assemblies (OFCA) Phase 2 Project Contract No. 60

Mandatory Pre-Bid Meeting

March 18, 2026



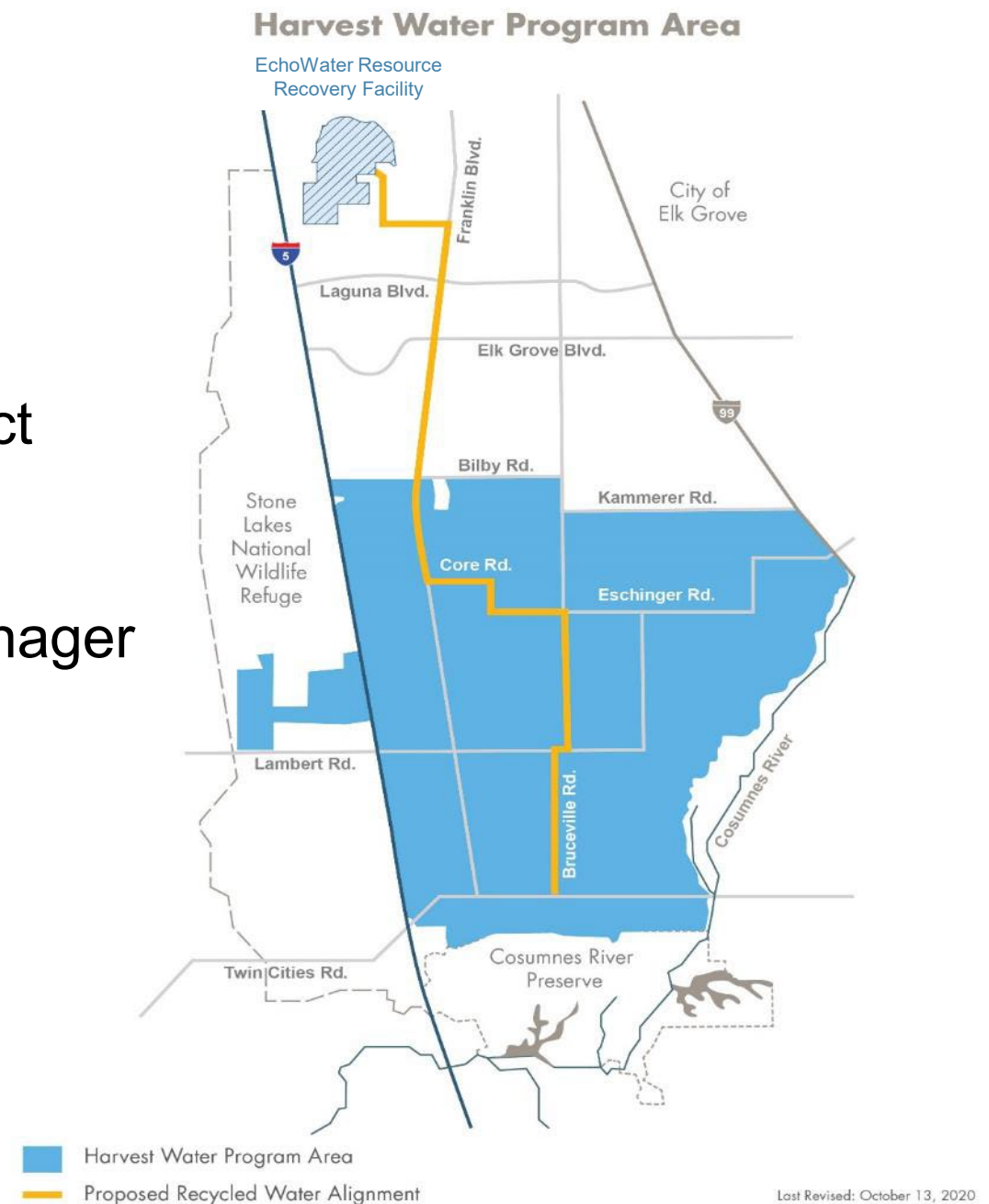
Agenda

- ◆ Introduction of OFCA Team
- ◆ General Overview of Harvest Water Program
- ◆ Overview of OFCA Project
- ◆ Contract Documents and Bid Requirements
- ◆ Safety and Coordination
- ◆ Environmental Overview and Requirements
- ◆ Q&A



Introductions

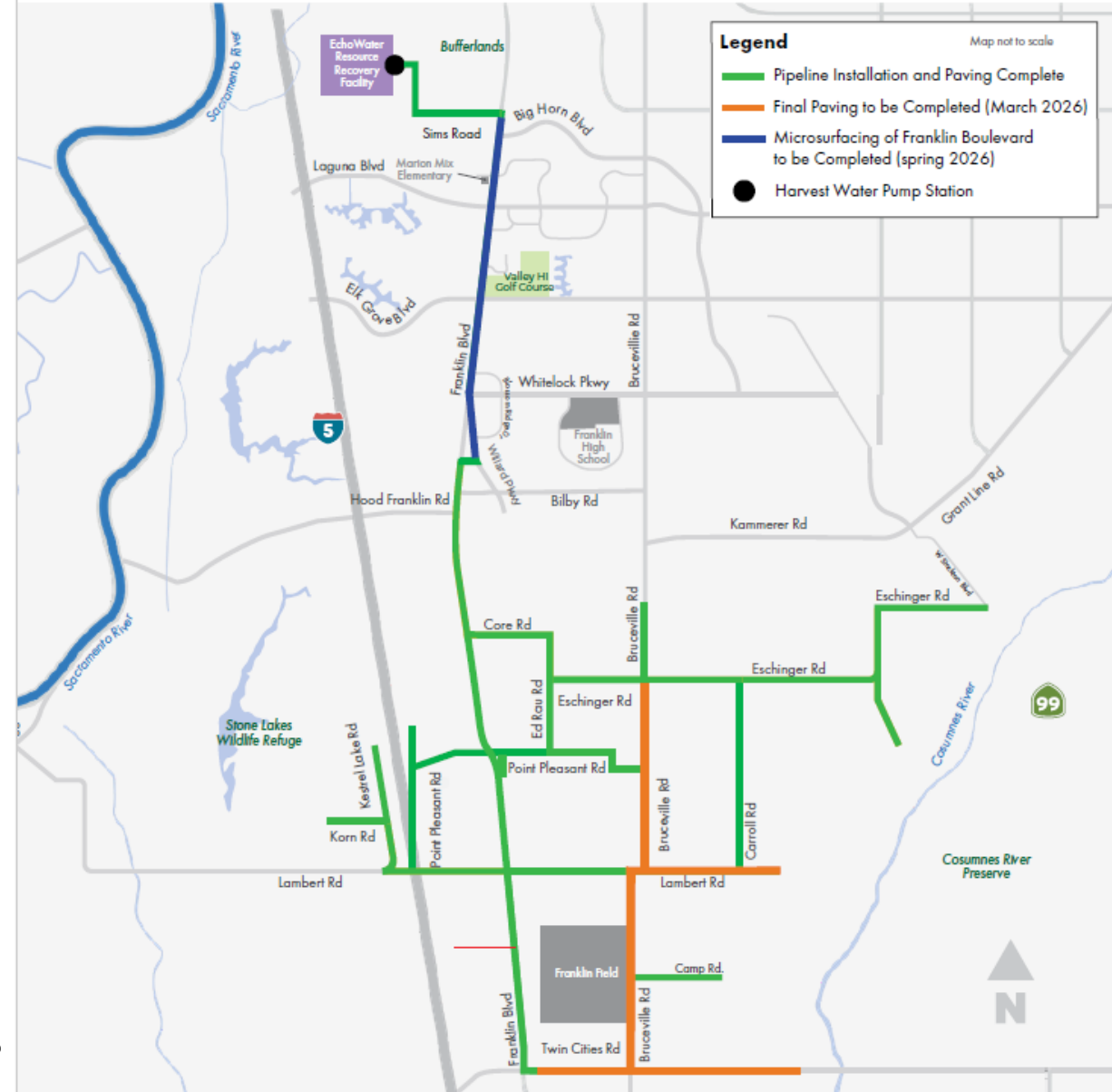
- Mike Crooks – Program Manager
- Mike Harrison/Scott Mueller – CPMO Project Manager
- Bryan Young – Environmental Program Manager
- Patrick Maloney – KSN, Designer
- Jeremy Pollett – ControlPoint, Designer
- Eric Keber – Construction Manager



Overview of Harvest Water Program

Construction Projects

1. Harvest Water Pumping Station
2. Elk Grove Transmission Pipeline
3. Franklin / Eschinger Pipeline
4. Central / South Pipelines
5. West Pipelines
6. On-Farm Connection Assemblies



On-Farm Connection Assemblies (OFCAs)

- 💧 100+ potential connections
- 💧 Phase 1: OFCAs - 53
 - 🟡 In construction
 - 🟡 Complete in Fall 2027
- 💧 Phase 2: OFCAs - 50
 - 🟡 100% of Irrigation Demand Goal (30,000 AF/Year)
 - 🟡 Advertise in February 2026
 - 🟡 Bid Award May 13, 2026
 - 🟡 NTP in June/July 2026
 - 🟡 Complete in Fall 2027



Major Project Components

- 💧 Installation of Below grade and above grading piping
- 💧 Piping Appurtenances
 - ❑ Control valve, check valve, magnetic flow meter, air release valve, taps
- 💧 Instrumentation and Electrical
 - ❑ Pressure and flow measurement
 - ❑ Control Panel with PLC, Batteries, cellular coms
 - ❑ Solar Panels
 - ❑ PLC installation at Harvest Water Pumping Station
- 💧 Civil
 - ❑ Grading, Fencing, Culvert Installation
 - ❑ Access Roads with apron

OFCA Phase 2 Project Requirements

- 💧 Bid and Reference Documents
- 💧 Addenda Overview
- 💧 Bidding Requirements
- 💧 Work Restrictions
- 💧 Safety and Coordination with Operations



Bid and Reference Documents

- Spec Section 00 21 13 – Instructions to Bidders
- Reference Documents in Appendices
 - Geotechnical Data and Baseline Reports
 - SWPPP
 - MMRP
- Final questions due 7 days prior to bid opening.
- Final addenda no later than 3 days prior to bid opening.

Planned Addenda

- Addendum No. 1 posted (Signature Sheet).
- Addendum No. 2 expected on 3/25

Bidding Requirements

◆ Forms required with the bid:

- ❑ BID FORM (Section 00 41 00)
- ❑ BID FORM – STIPULATED SUM (SINGLE PRIME CONTRACT)(Section 00 41 13)
- ❑ BID SECURITY FORM (Section 00 43 13)
- ❑ PROPOSED PRODUCTS FORM (Section 00 43 33)
- ❑ PROPOSED SUBCONTRACTORS FORM (Section 00 43 36)
- ❑ BIDDER'S INFORMATION (Section 00 45 12)
- ❑ NONCOLLUSION AFFIDAVIT (Section 00 45 19)

◆ Within 7 days from the 3 apparent low bidders

- ❑ ESCROW BID DOCUMENTS & CERTIFICATION (Section 00 43 53)
- ❑ BIDDERS' QUALIFICATIONS (Section 00 45 13)
- ❑ BIDDERS'S SAFETY PERFORMANCE (Section 00 45 14)
- ❑ BIDDER'S SUBCONTRACTOR QUALIFICATIONS (Section 00 45 15)
- ❑ IRAN CONTRACTING ACT DISCLOSURE FORM (Section 00 45 41)
- ❑ COMPLIANCE WITH RUSSIAN ECONOMIC SANCTIONS (Section 00 45 42)
- ❑ VALID CALIFORNIA AIR RESOURCES BOARD CERTIFICATES OF REPORTED COMPLIANCE FOR OFF-ROAD DIESEL-FUELED FLEETS (Section 01 57 19)

Work Restrictions

- Spec Section 01 14 00
 - Contract Milestones A, B, C
 - Traffic Control
 - Environmental and Permitting Constraints

Safety and Coordination with EchoWater Operations

- 💧 All workers must attend 1 hour safety training prior to working on site
- 💧 Approval required prior to starting any phase of work.
 - 📦 01 14 13 ACCESS TO SITE
 - 📦 01 14 16 COORDINATION WITH OCCUPANTS

Environmental Overview and Requirements

- Environmental Permits
- Worker Environmental Awareness Training
- Pre-construction surveys
- Seasonal restrictions and fencing requirements
- Tree Protection



South Sacramento Habitat Conservation Plan (SSHCP)

- The SSHCP is the primary mechanism for project environmental permit compliance.
- The SSHCP provides protection to 28 species of wildlife and their associated habitat. Fourteen (14) of these species occur within the HW project area. These include Giant Garter Snake, Western Pond Turtle, Sandhill Crane, and nesting raptors.



Worker Environmental Awareness Training

(DWG # C-506)

- WEAT will cover permit required avoidance and minimization measures (AMMs) that must be adhered to by all project field personnel to safeguard sensitive biological and cultural resources.
- WEAT will be conducted by SacSewer biologist.
- WEAT can be performed in the field as a tailgate meeting and will take approximately 30 minutes.

Pre-Construction Surveys

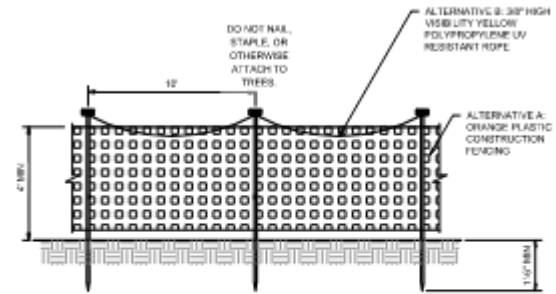
- Pre-construction surveys by a SacSewer biologist are required in advance of ground disturbing work in all areas of the project.
- Requirements for advance notification of ground disturbance are contained in SS 01 14 00 and SS 01 59 17. Required advance notification is at minimum 2 weeks and 3 week look ahead schedules are also required.

Seasonal Restrictions and Fencing Requirements

(DWG # C-506)

ENVIRONMENTAL

-  PROTECT WITH BMPS
-  SEASONAL RESTRICTION ZONE 1
-  SEASONAL RESTRICTION ZONE 2
-  TEMPORARY RIPARIAN IMPACT
-  GGS/WPT TEMPORARY AQUATIC IMPACT

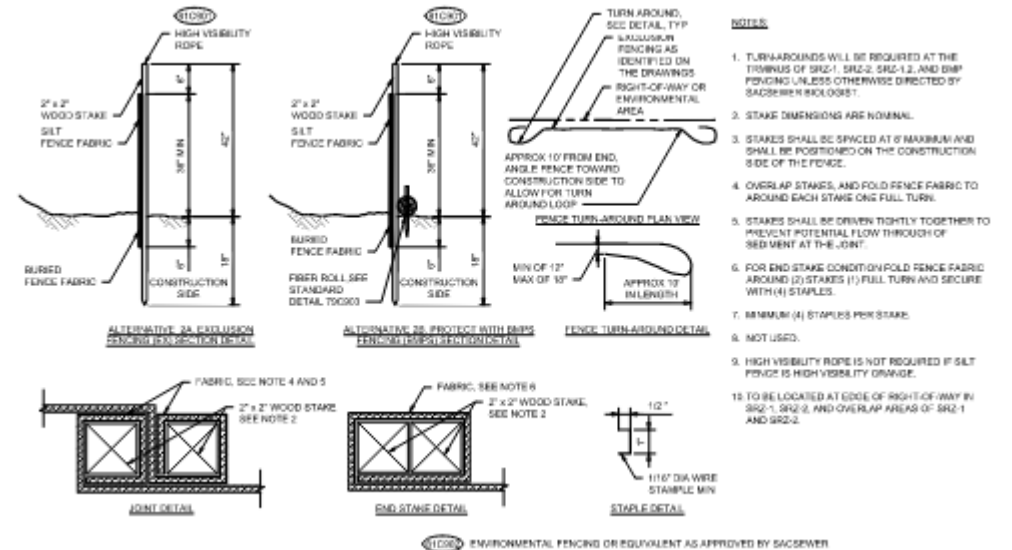


NOTES
1. FENCING OR ROPE MAY BE USED TO DELINEATE THE WORK AREA.

 CONSTRUCTION BOUNDARY FENCE (CBF)

DWG # C-507

DWG # G-005

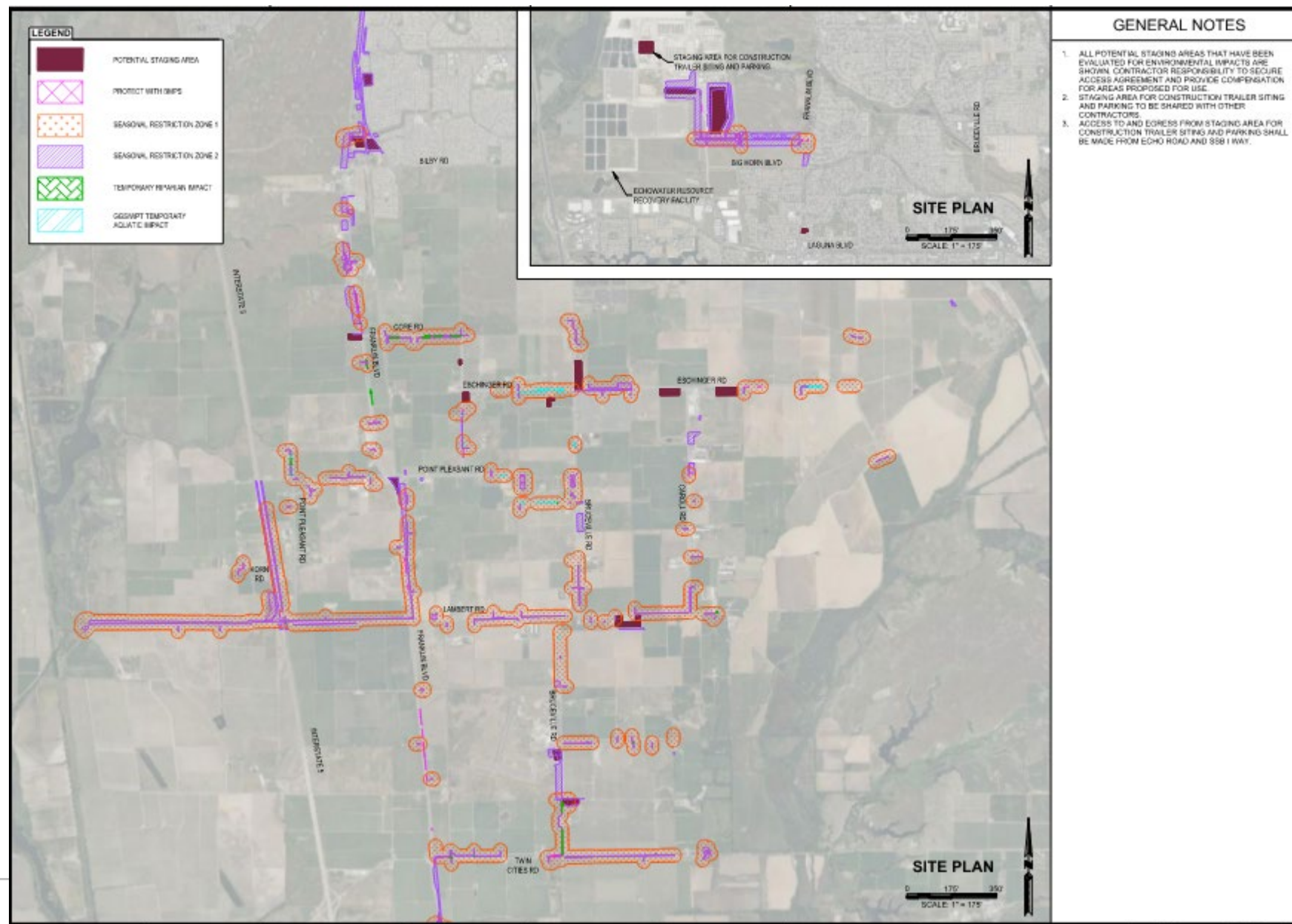


- NOTES**
1. TURNAROUNDS WILL BE REQUIRED AT THE TURNING OF SR2-1, SR2-2, SR2-1.2, AND BMP FENCING UNLESS OTHERWISE DIRECTED BY SACSSEWER ENGINEERS.
 2. STAKE DIMENSIONS ARE NOMINAL.
 3. STAKES SHALL BE SPACED AT 6' MAXIMUM AND SHALL BE POSITIONED ON THE CONSTRUCTION SIDE OF THE FENCE.
 4. OVERLAP STAKES, AND FOLD FENCE FABRIC TO AROUND EACH STAKE ONE FULL TURN.
 5. STAKES SHALL BE DRIVEN TIGHTLY TOGETHER TO PREVENT POTENTIAL FLOW THROUGH OF SEDIMENT AT THE JOINT.
 6. FOR END STAKE CONDITION FOLD FENCE FABRIC AROUND (2) STAKES (1) FULL TURN AND SECURE WITH (4) STAPLES.
 7. MINIMUM (4) STAPLES PER STAKE.
 8. NOT USED.
 9. HIGH VISIBILITY ROPE IS NOT REQUIRED IF SILT FENCE IS HIGH VISIBILITY ORANGE.
 10. TO BE LOCATED AT EDGE OF RIGHT-OF-WAY IN SR2-1, SR2-2, AND OVERLAP AREAS OF SR2-1 AND SR2-2.

 ENVIRONMENTAL FENCING OR EQUIVALENT AS APPROVED BY SACSSEWER

Seasonal Restriction Zones and Staging Areas

(DWG # G-006)



Questions?

